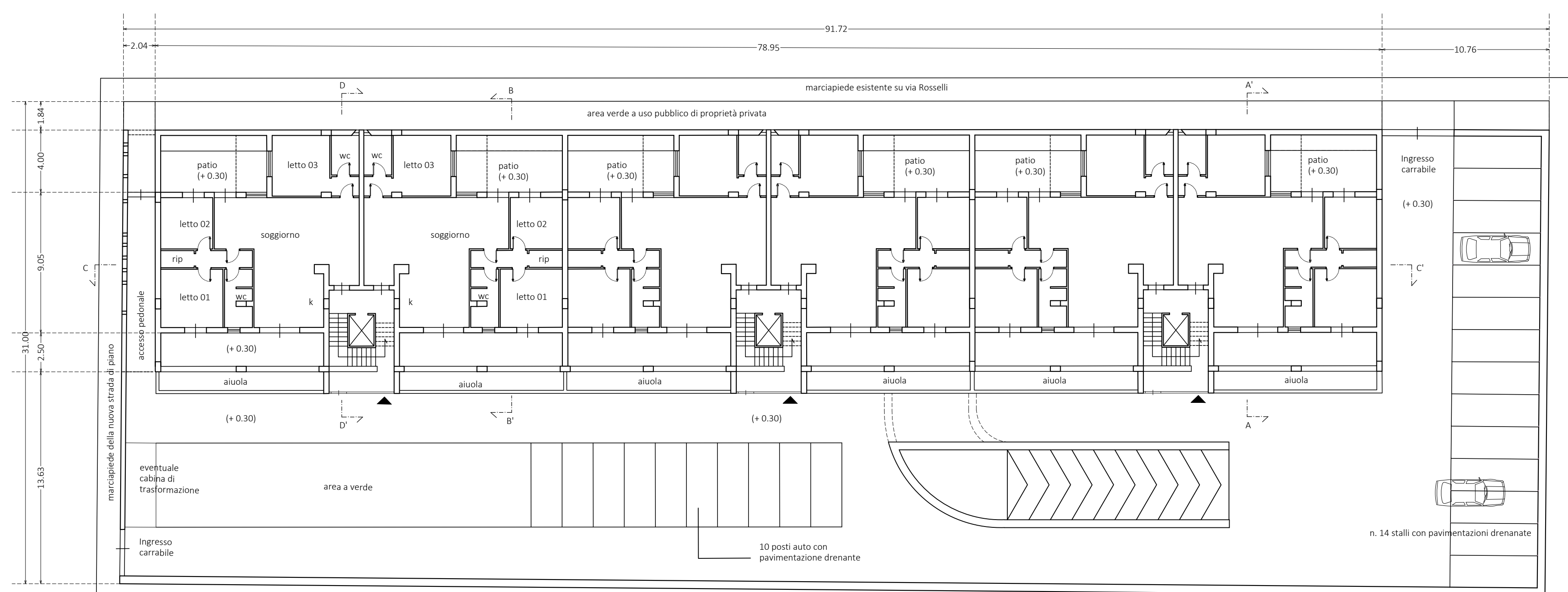
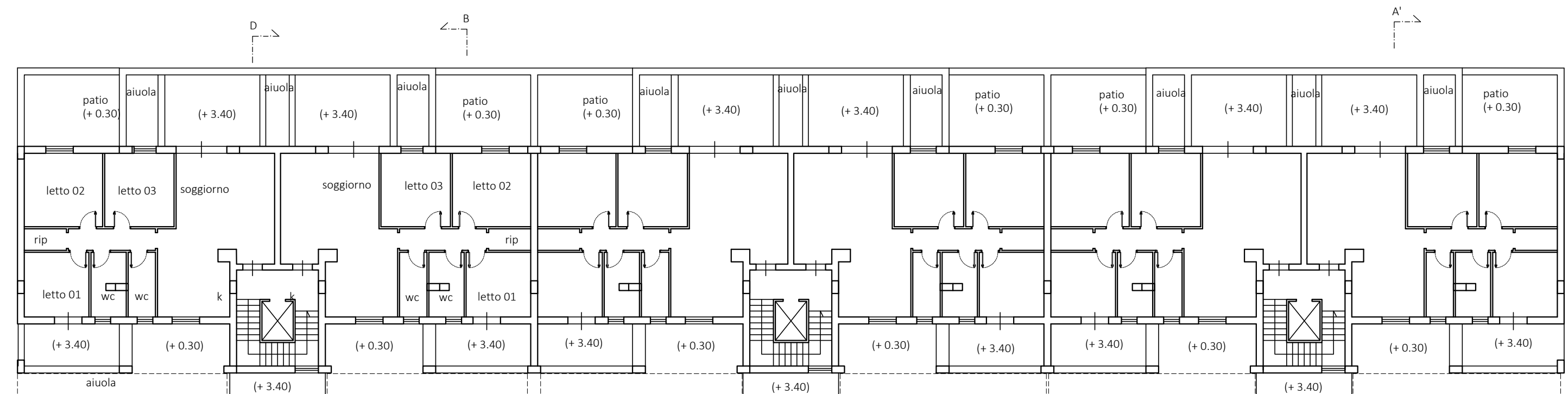


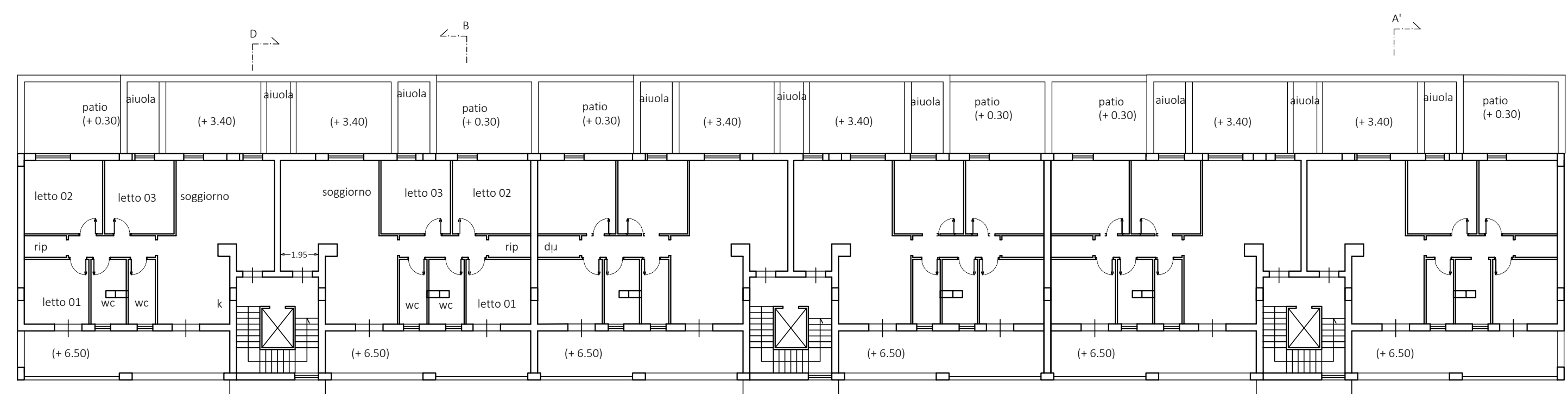
Pianta piano seminterrato



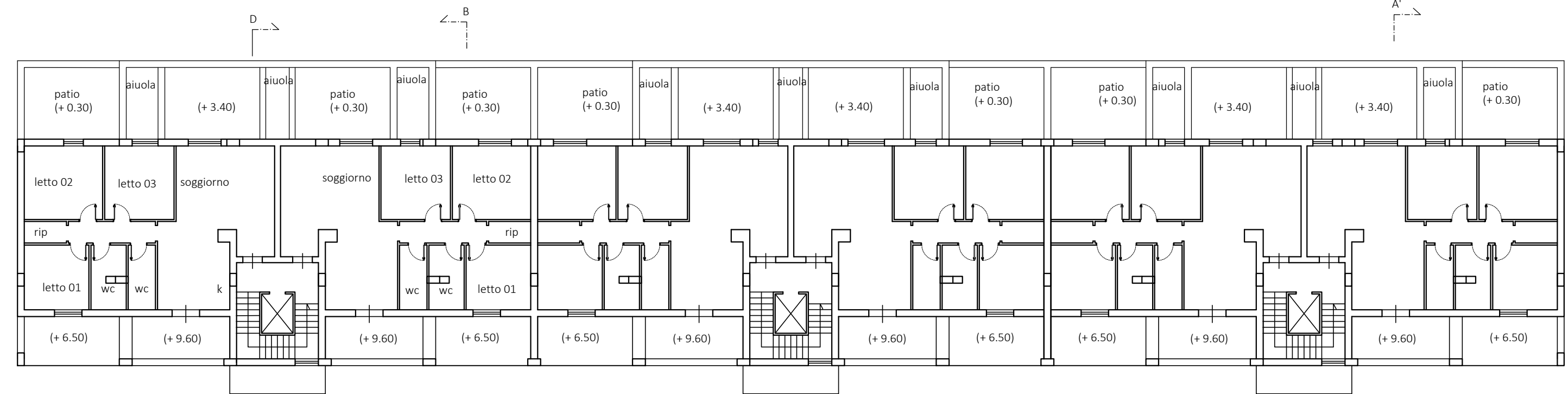
Pianta piano terra



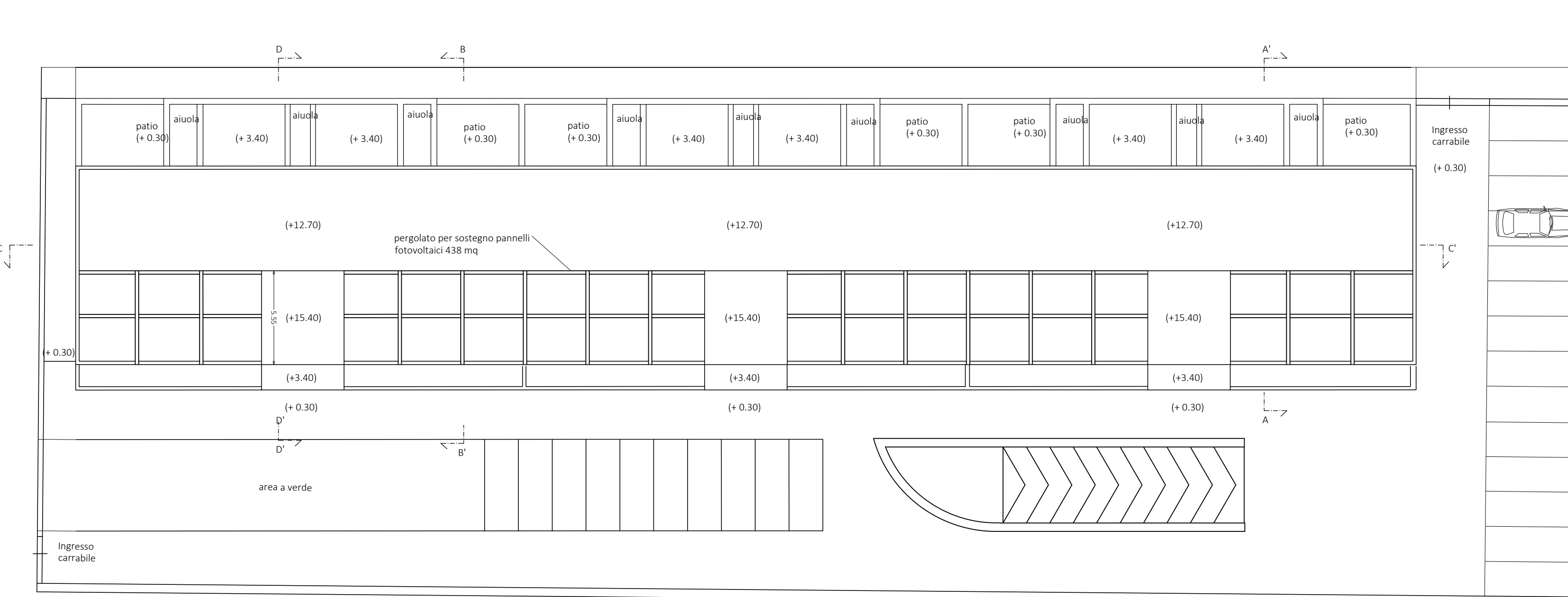
Pianta primo livello



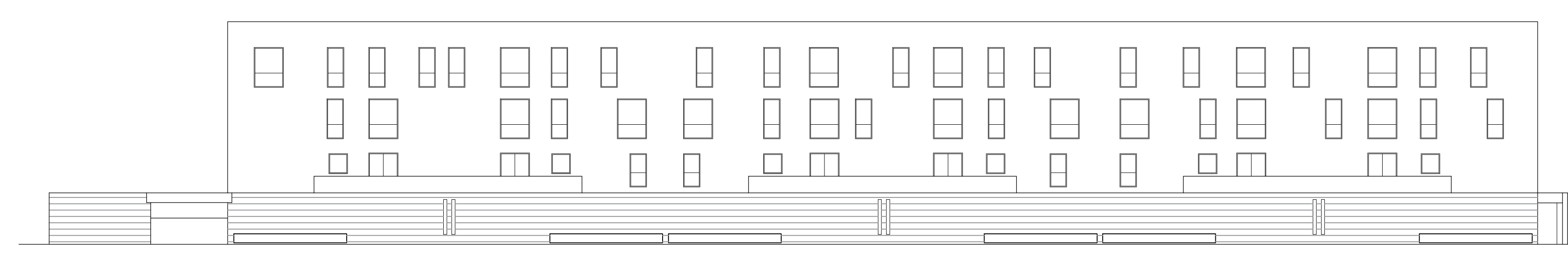
Pianta secondo livello



Pianta terzo livello



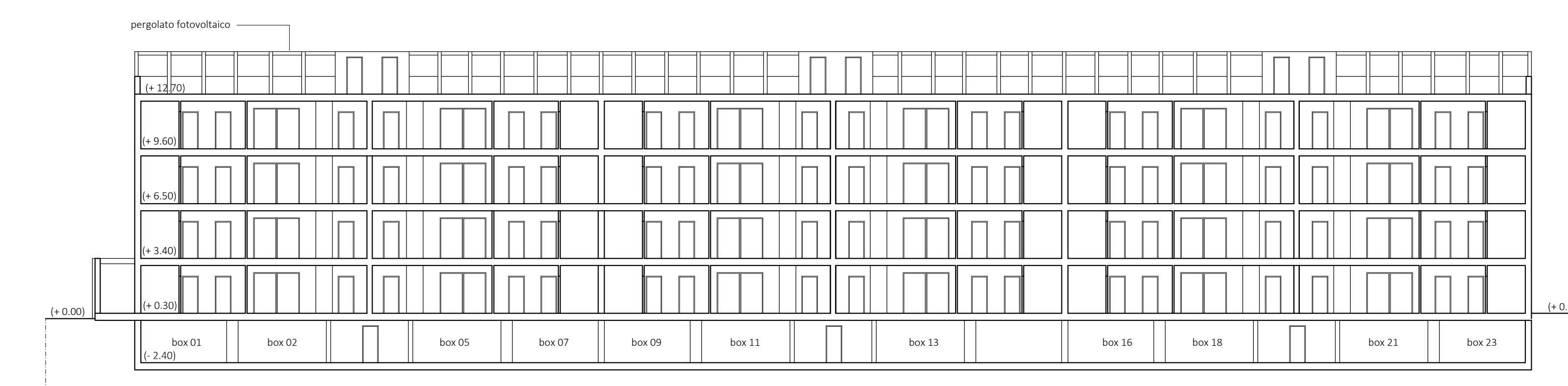
Pianta delle coperture



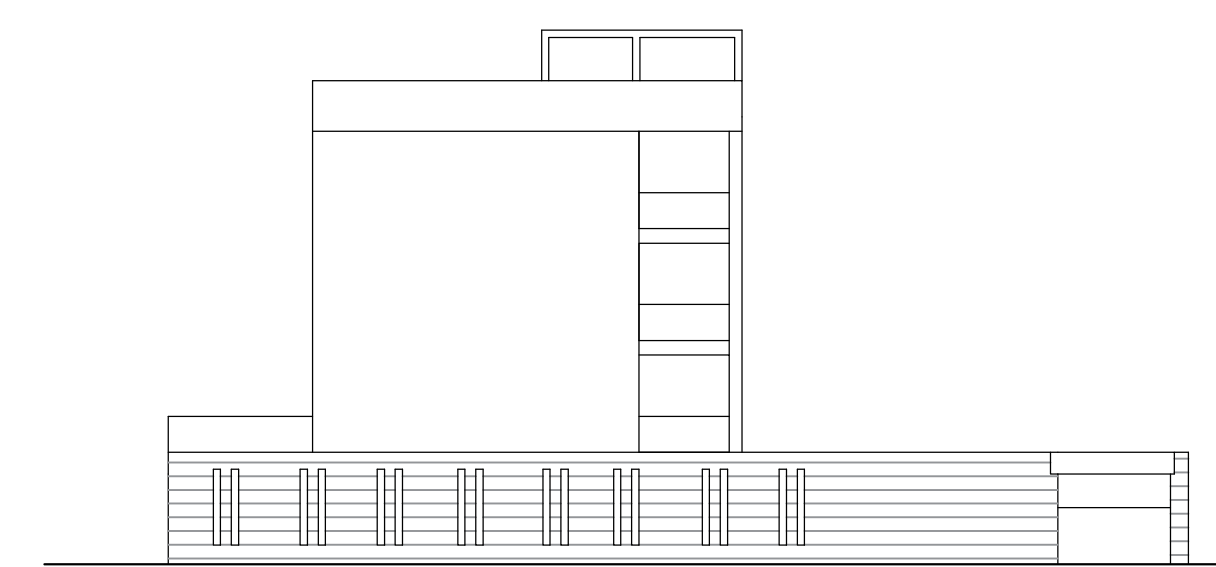
Prospetto nord su via Rosselli



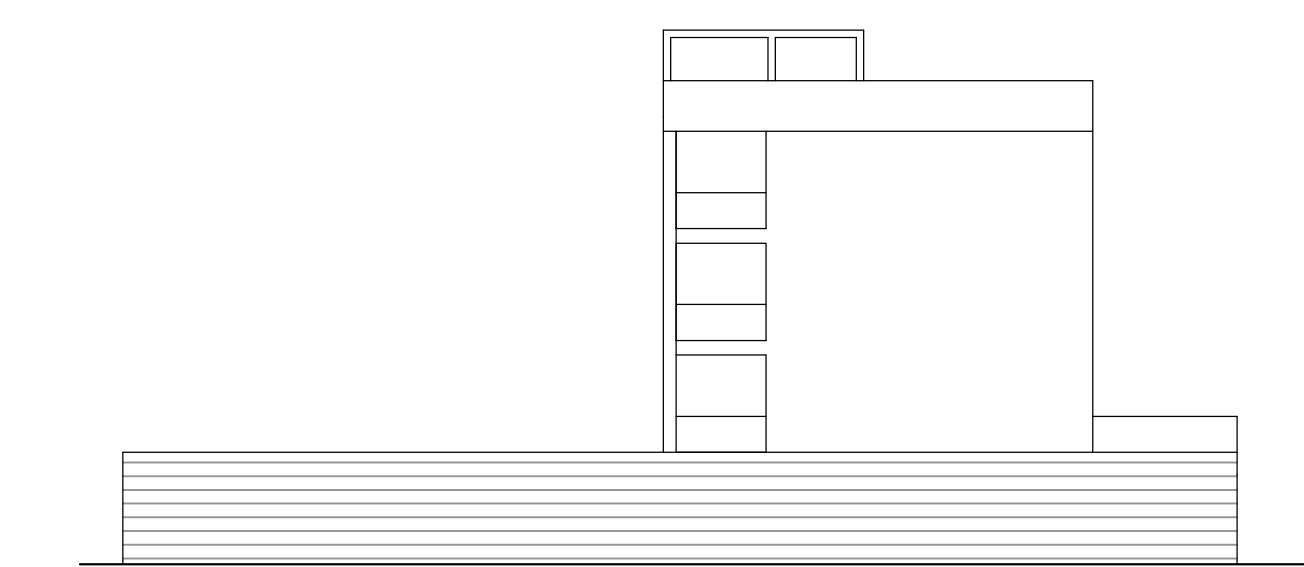
Prospetto sud sul cortile interno



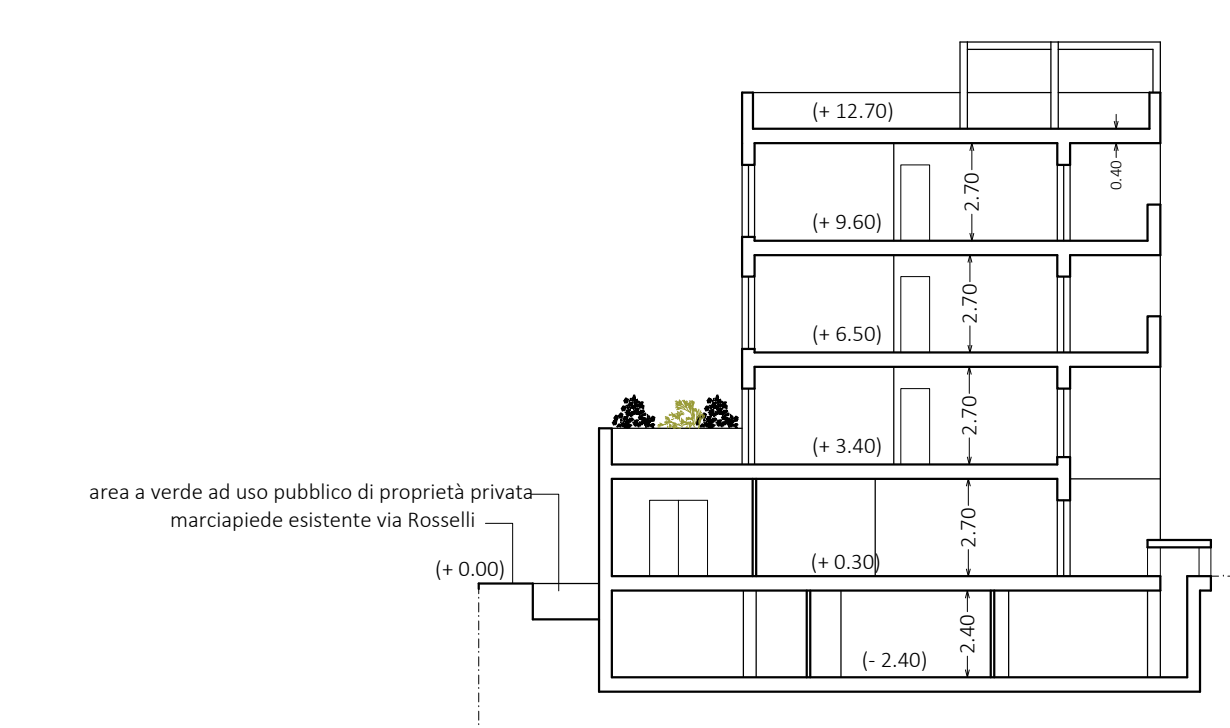
Sezione C-C'



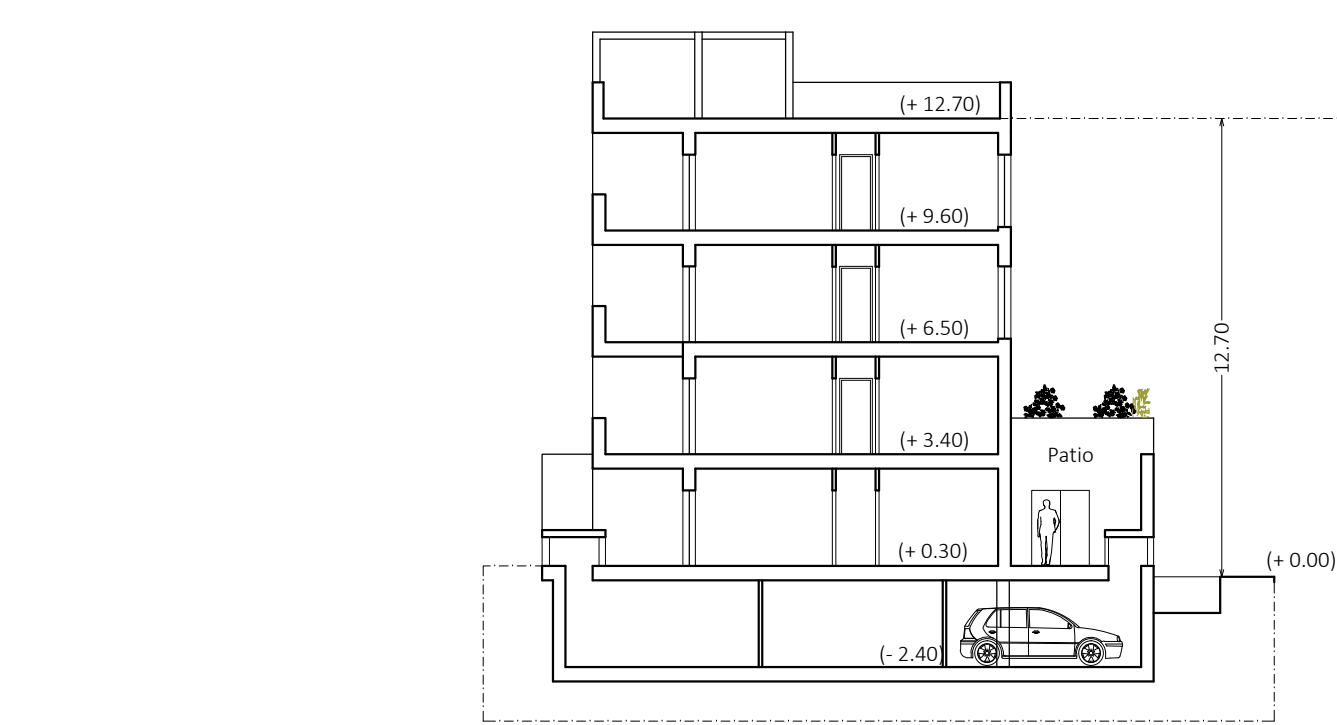
Prospetto ovest sulla nuova strada di piano



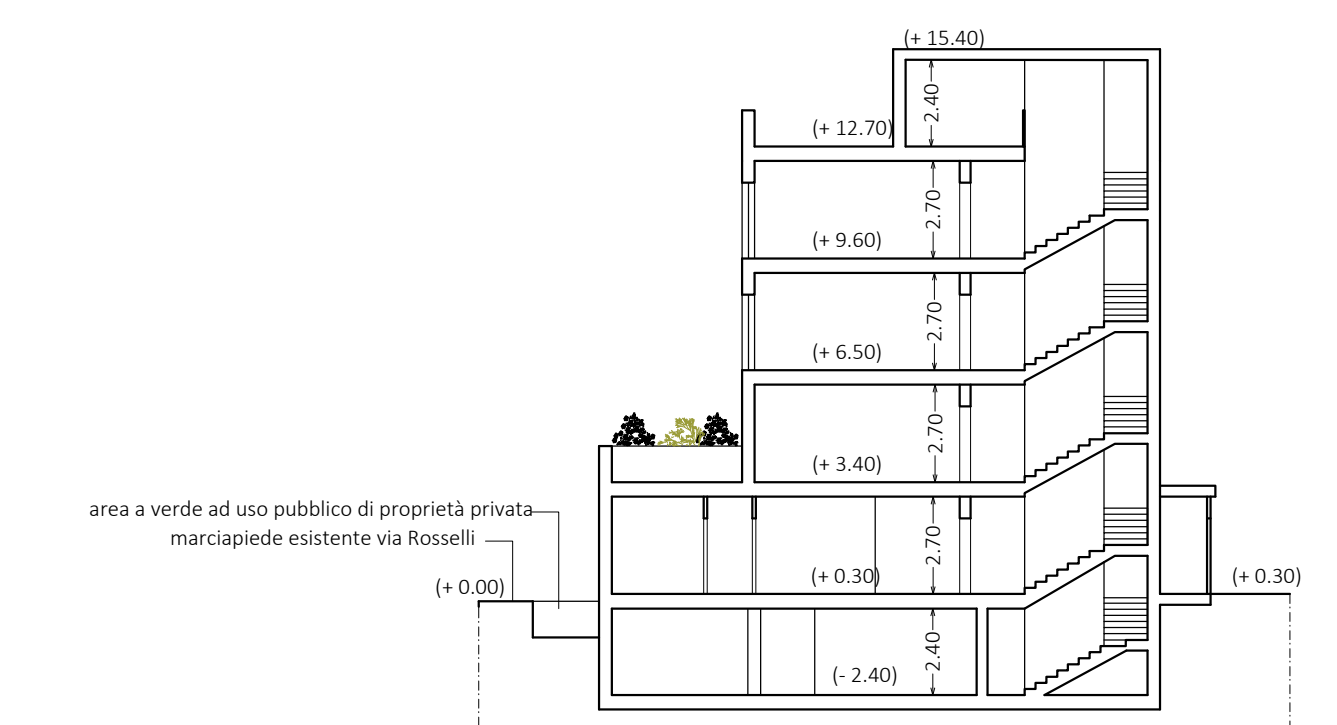
Prospetto est



Sezione A-A'



Sezione B-B'



Sezione D-D'

COMUNE DI CAIVANO
Provincia di Napoli

PIANO URBANISTICO ATTUATIVO
ZONA "C.1.21.A" del P.R.G.

ELABORATO

PROGETTO ARCHITETTONICO LOTTO B
PIANTE
PROSPETTI
SEZIONI

IL PROGETTISTA:
Arch. LUIGI SIRICO

IL COMMITTENTE:
IL CLANIO SRL

TAV. 09

SCALA 1/200